

# igniteXML

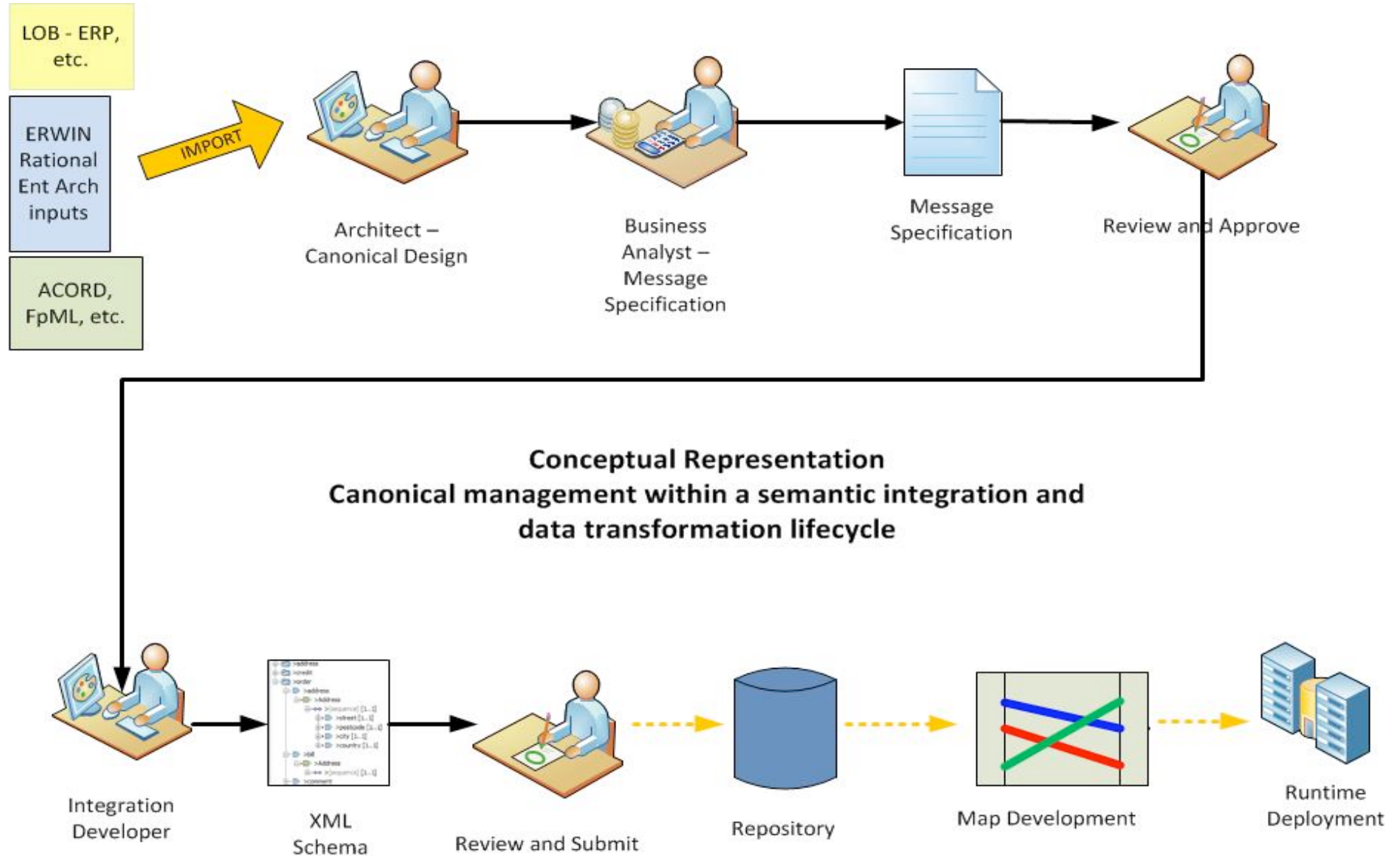
Canonical Model Management

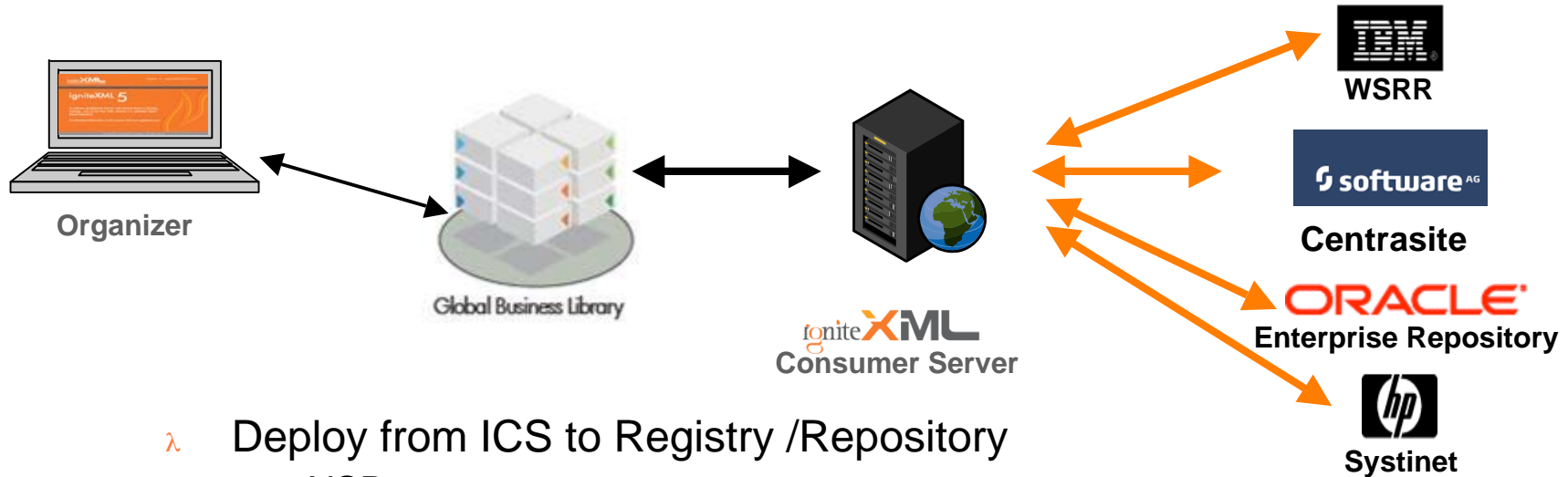
Simplifying Enterprise Integration with  
one model for data in motion



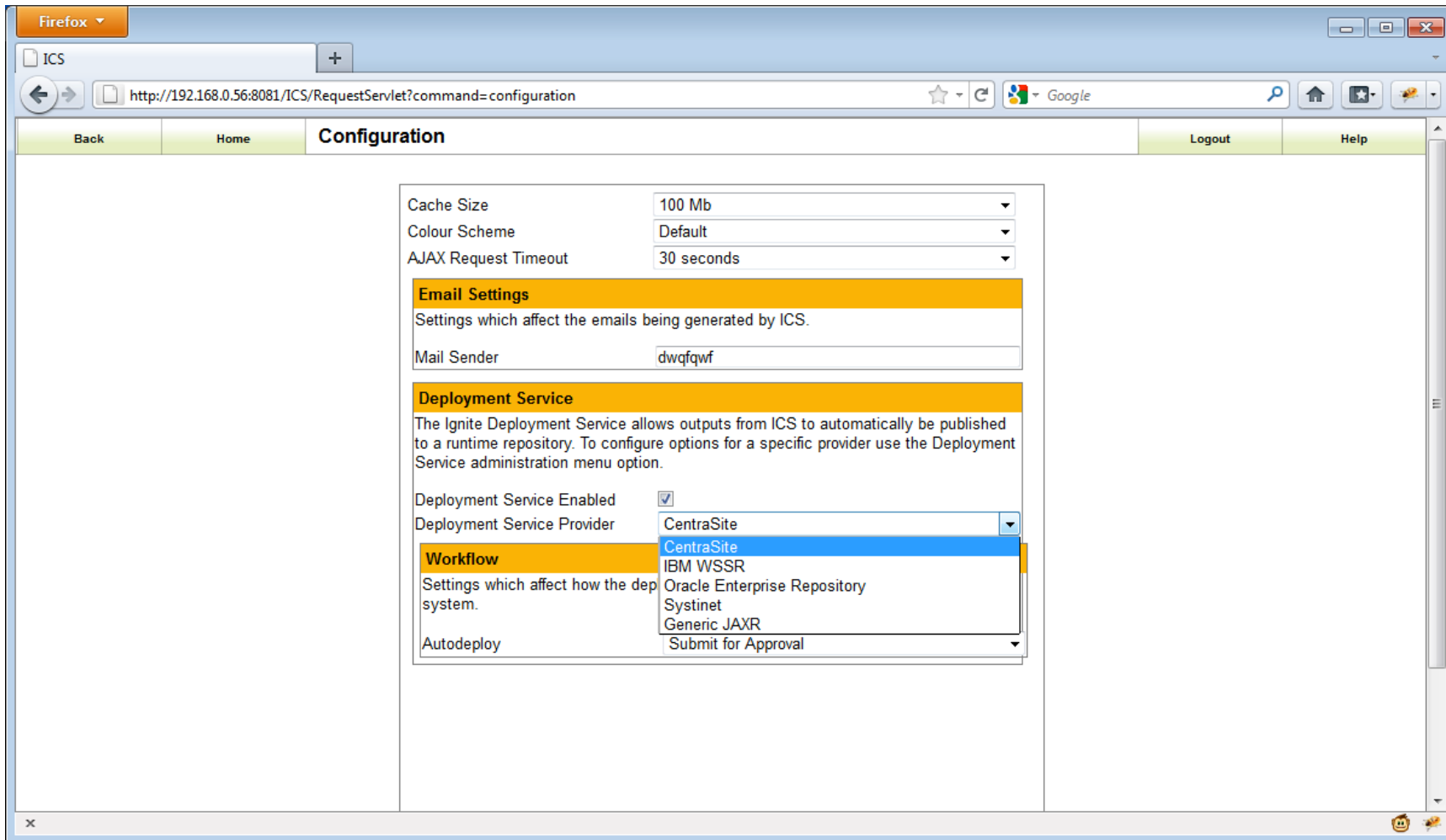
## Enterprise Integration Process Flow with Canonical Model Management







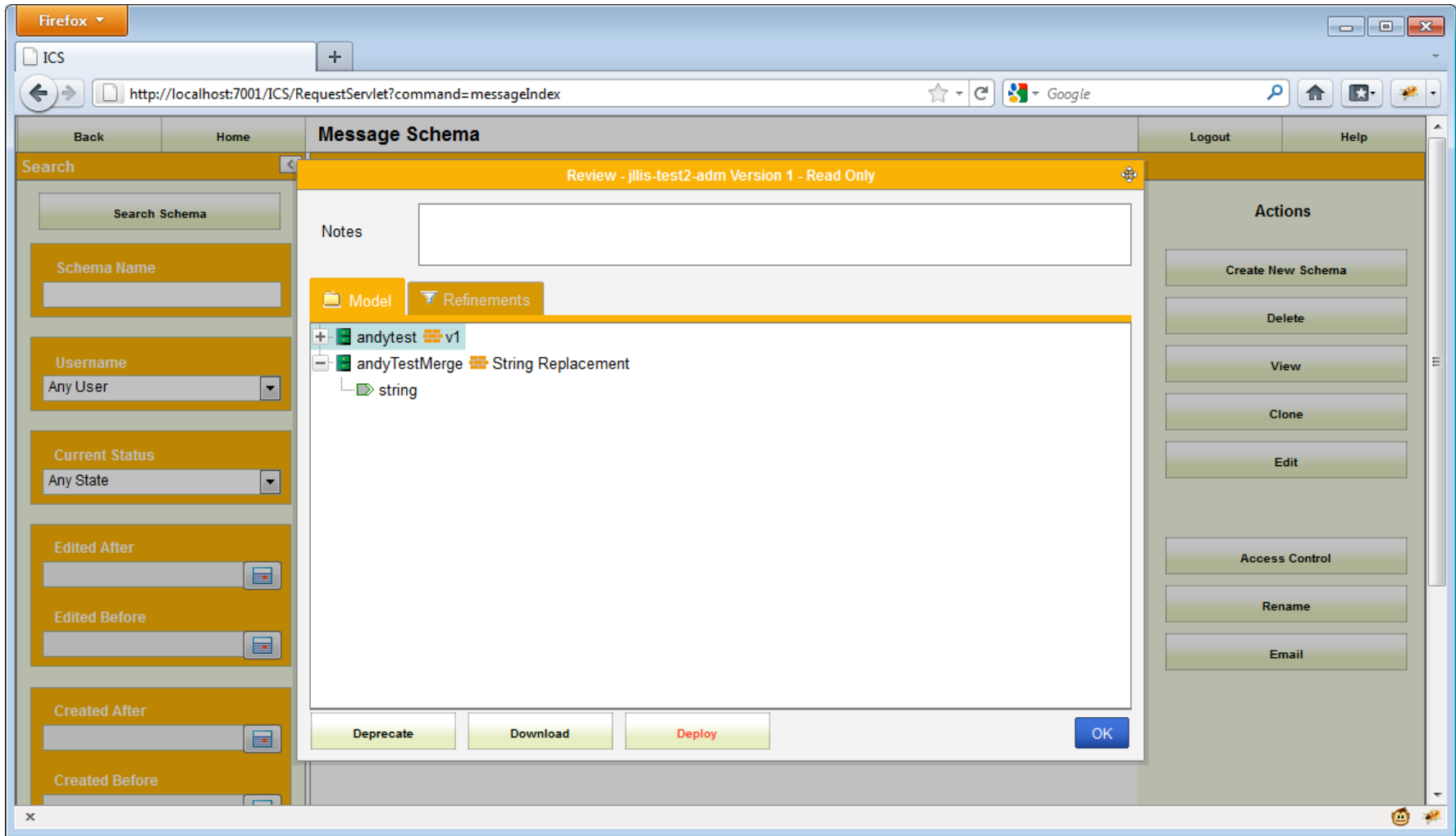
- λ Deploy from ICS to Registry /Repository
  - XSD
  - Services (WSDL)
  - Mapping Report
  - Documentation
- λ Version synchronization
- λ Extended Impact analysis
- λ Incorporates the Canonical Model to Close Looped Governance

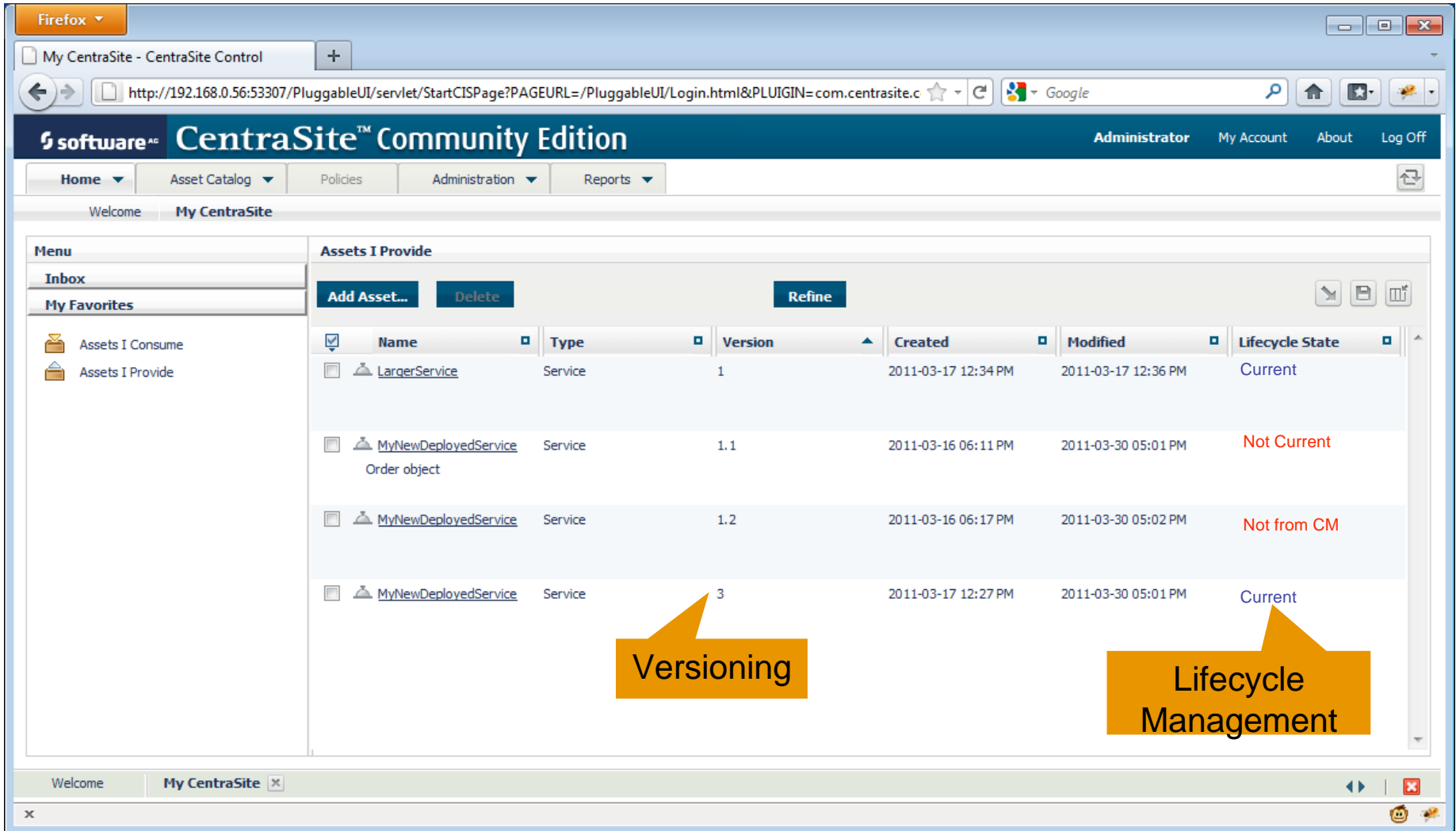


The screenshot shows a Firefox browser window displaying the ICS Configuration page. The address bar shows the URL: `http://192.168.0.56:8081/ICS/RequestServlet?command=configuration`. The page has a navigation bar with links for Back, Home, Configuration, Logout, and Help. The main content area is divided into several sections:

- Cache Size:** 100 Mb
- Colour Scheme:** Default
- AJAX Request Timeout:** 30 seconds
- Email Settings:** Settings which affect the emails being generated by ICS. Mail Sender: dwqfqw
- Deployment Service:** The Ignite Deployment Service allows outputs from ICS to automatically be published to a runtime repository. To configure options for a specific provider use the Deployment Service administration menu option. Deployment Service Enabled:  Deployment Service Provider: CentraSite
- Workflow:** Settings which affect how the deployment system. Autodeploy: Submit for Approval

# ICS Approver deploys to CentraSite





The screenshot displays the CentraSite Community Edition web application interface. The browser window shows the URL `http://192.168.0.56:53307/PluggableUI/servlet/StartCISPage?PAGEURL=/PluggableUI/Login.html&PLUIGIN=com.centrasite.c`. The application header includes the CentraSite logo and navigation links for Administrator, My Account, About, and Log Off. A main navigation bar contains Home, Asset Catalog, Policies, Administration, and Reports. The main content area is titled "Assets I Provide" and features a table with columns for Name, Type, Version, Created, Modified, and Lifecycle State. The table lists several services, including "LargerService" (Current), "MyNewDeployedService" (Not Current), and "MyNewDeployedService" (Not from CM). Two callouts highlight specific features: "Versioning" points to the version numbers (1, 1.1, 1.2, 3) and "Lifecycle Management" points to the Lifecycle State column.

Name	Type	Version	Created	Modified	Lifecycle State
LargerService	Service	1	2011-03-17 12:34 PM	2011-03-17 12:36 PM	Current
MyNewDeployedService Order object	Service	1.1	2011-03-16 06:11 PM	2011-03-30 05:01 PM	Not Current
MyNewDeployedService	Service	1.2	2011-03-16 06:17 PM	2011-03-30 05:02 PM	Not from CM
MyNewDeployedService	Service	3	2011-03-17 12:27 PM	2011-03-30 05:01 PM	Current

## Demonstration

---

[www.igniteXML.com](http://www.igniteXML.com)

---



**Call: USA 415-373-0302**

**UK (+44) 01344-390542**

**Email; [jbogard@digitalml.com](mailto:jbogard@digitalml.com)**

Canonical Model Management  
Forum Group



Forrester Blog – Mike Gilpin



FORRESTER®