

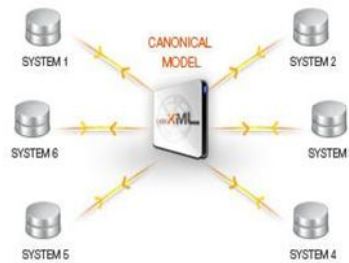
# igniteXML

## Relational Data Management & Canonical Model Management

**Rational.** software

**INFORMATICA**  
The Data Integration Company™ *Formerly Siperian*

**ERwin**



*Simplified example of a Canonical Model*



*Model Manager*



*Business Analyst*



*Integration developer*

Organizations are moving away from point-to-point integration because it is too expensive (particularly in terms of lifecycle management), it is too complex and it often slows companies down. Somewhere along that journey many have realized that it is essential to adopt a Canonical Model approach to ensure data interoperability for data in motion.

An effective Canonical Model will need to span both the logical level (so it can be understood by the business) as well as the physical level, as ultimately it will be used to generate XML messages with their mappings to backend systems.

In some cases organizations may be unable to leverage industry standard physical XML models for data in motion. They may have however, invested in a model for their data at rest (Relational Master Data Management).

Relational Data Models do not naturally lend them self to data in motion because they are relational in nature and data in motion needs to be in XML which is hierarchical. Therefore it would seem that the two models are incompatible. With igniteXML it is possible to cross this divide.

The approach of igniteXML is a uniquely powerful way to harmonize the two model requirements and to synchronize the Data Models and Canonical Model.

igniteXML has a patented method of managing objects in a modelling world that understand they need to be combined to ultimately generate XML a very flexible way.

## Re-using the Model NOT XML Schema



In the Canonical Model Management world, schema is decomposed into an object model where every object is individually managed in a collaborative repository. Extensions, updates, changes, versions, and impact analysis are done at an object level with a role based approval process. Model managers are able to attach metadata to individual objects to provide data lineage, drive model adoption, and assist with mappings.

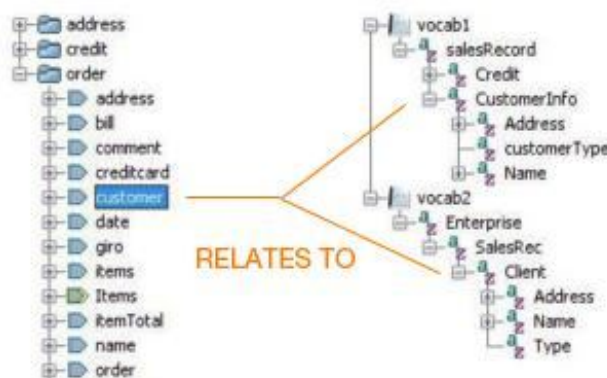
Model managers can collaboratively use igniteXML leverage the logic in a Master Data model to form the basis of a Canonical Model for data in motion. There are some very powerful capabilities that assist in this. For example, data models can be imported into igniteXML as either candidate model components or as metadata. As these are imported into igniteXML they are decomposed down to XML objects. igniteXML has a normalization wizard which can be used to identify commonalities and help to extract a model from the various sources.

### Collaboratively managed



If the data model cant be used as the basis of a Canonical Model it can be mapped to the canonical..

### Align the Canonical Model with Vocabularies

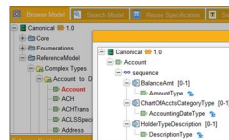


Once complete, the model is made available to integration developers and business analysts as reusable objects allowing them to easily navigate the model, find what they are looking for, build or reuse specifications and select components to auto-generate XSD messages and mapping reports.

The alignment of the MDM to the Canonical is very powerful here as consumers can find objects in the Canonical using terms they are familiar with in the Data Model. Also igniteXML helps with the mapping of the XML message to the back end systems because it understands the relationships between the Canonical Model and the Data Model.

The integration developers can make full use of the web based trimming functionality in igniteXML to remove the schema bloat and produce runtime optimized messages and schema that are 100% compliant with the standard but are a fraction of the size. This ensures all messages are consistent and derived from the latest version of the model – igniteXML combines governance and reuse.

## A common reference point for all



Business Analyst

Reference the model  
in specifications



Integration Developer

Build Messages and  
mappings from the model

- All messages
  - 100% consistent
  - Optimized for runtime
  - Clearly understood
  - Easy to maintain
  - Mapped to data model
- The result...
  - Reuse and Agility
  - Runtime performance
  - Less work
  - Lower costs
  - Data governance

digitalML, the makers of igniteXML, is the enterprise Canonical Model Management company. igniteXML is used by Integration and Service Oriented Architecture (SOA) teams in Fortune 2000 and large Government organizations. Through patented technology, igniteXML has changed the ways that customers manage and ensure adoption of their Canonical Model.

**North America Corporate Headquarters:**

digitalML-USA Inc.  
580 California Street, Suite 1600  
San Francisco, CA 94104  
Tel: 1.415.373.0302 Fax: 1.415.373.0307  
Email: [jbogard@digitalml.com](mailto:jbogard@digitalml.com) and [support@digitalml.com](mailto:support@digitalml.com)

**UK Corporate Headquarters:**

digitalML Ltd.  
Atrium Court  
The Ring  
Bracknell, Berkshire, RG12 IBW  
Tel: 44 1344 390542  
Email: [jsindall@digitalml.com](mailto:jsindall@digitalml.com) and [support@digitalml.com](mailto:support@digitalml.com)

Why not invest an hour in an online demo to  
simplify your Enterprise Integration ?



Call: USA 415-373-0302  
UK (+44) 01344-390542  
Email; [jbogard@digitalml.com](mailto:jbogard@digitalml.com)